



**NEW!**

**TITAN™**

**DIESEL  
FUEL**

**PREMIUM &  
COLD-FLO**



**WATERFORD**  
OIL CO., Inc.

Tel: 507-645-5659  
[www.waterfordoil.com](http://www.waterfordoil.com)





# WATERFORD

OIL CO., Inc.

**FUELED** *by* **INNOVATION** • **POWERED** *by* **SERVICE**  
**DRIVEN** *by* **QUALITY**

**Waterford Oil Company** is a family run enterprise that has been in operation for over 80 years. Waterford has built trust in the energy industry by delivering the highest quality petroleum products backed by prompt, expert service.

Our extensive geographical footprint allows us to minimize any supply concerns and offer the most competitive contracts in the region.

Look to Waterford Oil for reliable delivery of quality gasoline, diesel fuel, and oil throughout the central United States. Visit us on the web at: [www.waterfordoil.com](http://www.waterfordoil.com) for more information.



# PRESENTING TWO HIGH-PERFORMANCE

# DIESEL FUELS

**NEW!**

With premium detergents, and cetane boosters for a cleaner-burning, high-performance fuel.

*TITAN™ Diesel Fuels are blended for optimal performance under any condition. Our diesel fuels contain a precision-formulated additive package with the proper levels of cleaning agents, cetane boosters, and cold flow anti-gel for most environments.*

## Waterford TITAN™ Fuels:

- **Can be used in all vehicles that run on traditional diesel fuel, including next-generation ultra-clean diesel engines**
- **Are formulated with premium detergency that meets Peugeot DW10 performance standards**
- **Meet Ultra-Low Sulfur Diesel (ULSD) requirements, containing less than 15 ppm sulfur content**
- **Are formulated with increased cetane levels (by up to 4 cetane numbers). Performance benefits include:**
  - **Easier ignition and quicker starting at lower temperatures**
  - **Cleaner burning with reduced smoke and odor while providing faster, smoother warm-ups, and quieter operation**
- **Meet or exceed federal and state fuel regulations**



This premium product keeps diesel engines running clean and operating efficiently for peak on- and off-road performance. TITAN™ Premium Diesel Fuel is specially formulated with additives that provide optimal lubrication, cleaning, and emissions performance to maximize mileage. TITAN™ Premium Diesel Fuel also helps prevent corrosion and inhibit rust to help extend equipment life.

### TITAN™ Premium Diesel Fuels:

- Lubricate and protect fuel systems from corrosion
- Contain stabilizers to protect against fuel degradation for extended storage life and improved combustion
- Contain a premium detergent for:
  - Keeping injectors clean and preventing injector deposits
  - Restoring lost power and fuel economy
  - Helping to reduce emissions (smoke, carbon monoxide, unburned hydrocarbons, and particulates)
  - Helping improve vehicle drivability and reducing maintenance costs
- Prevent wax crystal growth
- Are formulated to reduce the fuel pour point by as much as 50°F and cold filter plugging point by up to 40°F\*



This diesel fuel features all of the benefits of TITAN™ Premium Diesel Fuel with added extreme cold weather protection. TITAN™ Cold-Flo Diesel Fuel includes a combination of wax anti-settling additives (WASA) and cold flow improvers with de-icer to help fuel flow and prevent fuel filter plugging in frigid conditions. Please inquire about custom blends for optimal performance in various levels of sub-zero temperatures.

### TITAN™ COLD-FLO Diesel Fuels:

- Contain all the benefits of TITAN™ Premium Diesel Fuels
- Are formulated with advanced additive technology that
  - Lowers pour point (PP) and cold filter plugging point (CFPP) of biodiesel blends

Biodiesel fuel begins to crystallize, or gel, around freezing (between 32-36°F) and will clog fuel filters between 22-28°F. These crystals will eventually stop the flow of fuel and make your equipment inoperable. TITAN™ Cold-Flo Diesel Fuel contains a premium additive package to combat this and what other conventional winter additives can't in biodiesel and biodiesel blends.

This additive package can be used in blends up to 20% biodiesel (B20). It can lower cold filter plugging point (CFPP) in B5 blends by up to 25° and in B10 and B20 blends up to 20°. It can also achieve low temperature flow test (LTFT) in B5 blends.

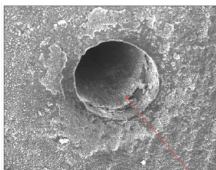
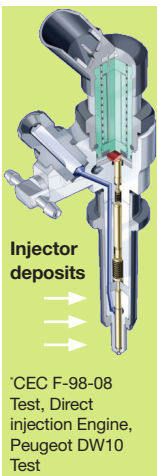




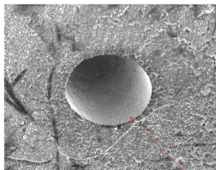
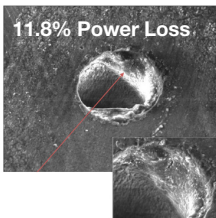
# TITAN™

**PREMIUM DIESEL FUEL**

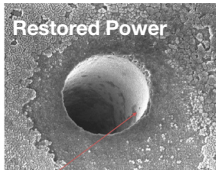
## Removal of Internal Diesel Injector Deposits (IDID)\*



Before (magnified view)



Clean-up after use of deposit control additive



*Look to Waterford Oil for these other solutions*

- Fuel Service—Gasoline, Biofuels
- Diesel Exhaust Fluid
- Lubricants
- Chemicals & Cleaners
- Propane Delivery
- Equipment Installation

*Industries served*

- Commercial
- Industrial
- Agriculture
- Retail
- Aviation
- Marine



**WATERFORD**

OIL CO., Inc.

For more information contact your Waterford Oil sales representative.

Tel: 507-645-5659 • [www.waterfordoil.com](http://www.waterfordoil.com)